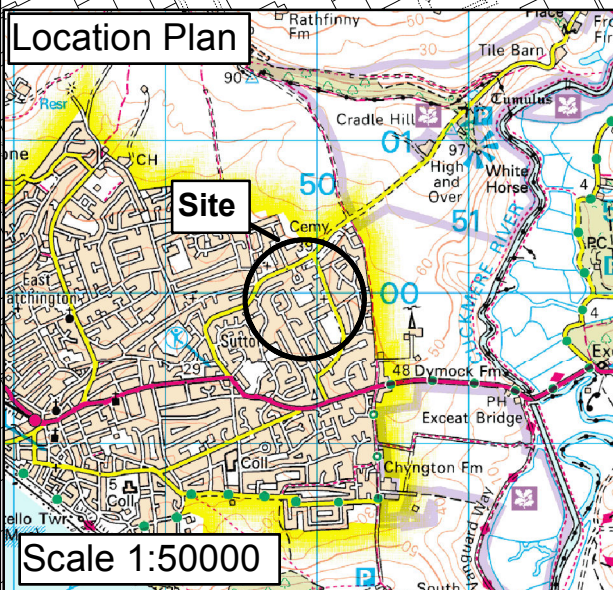
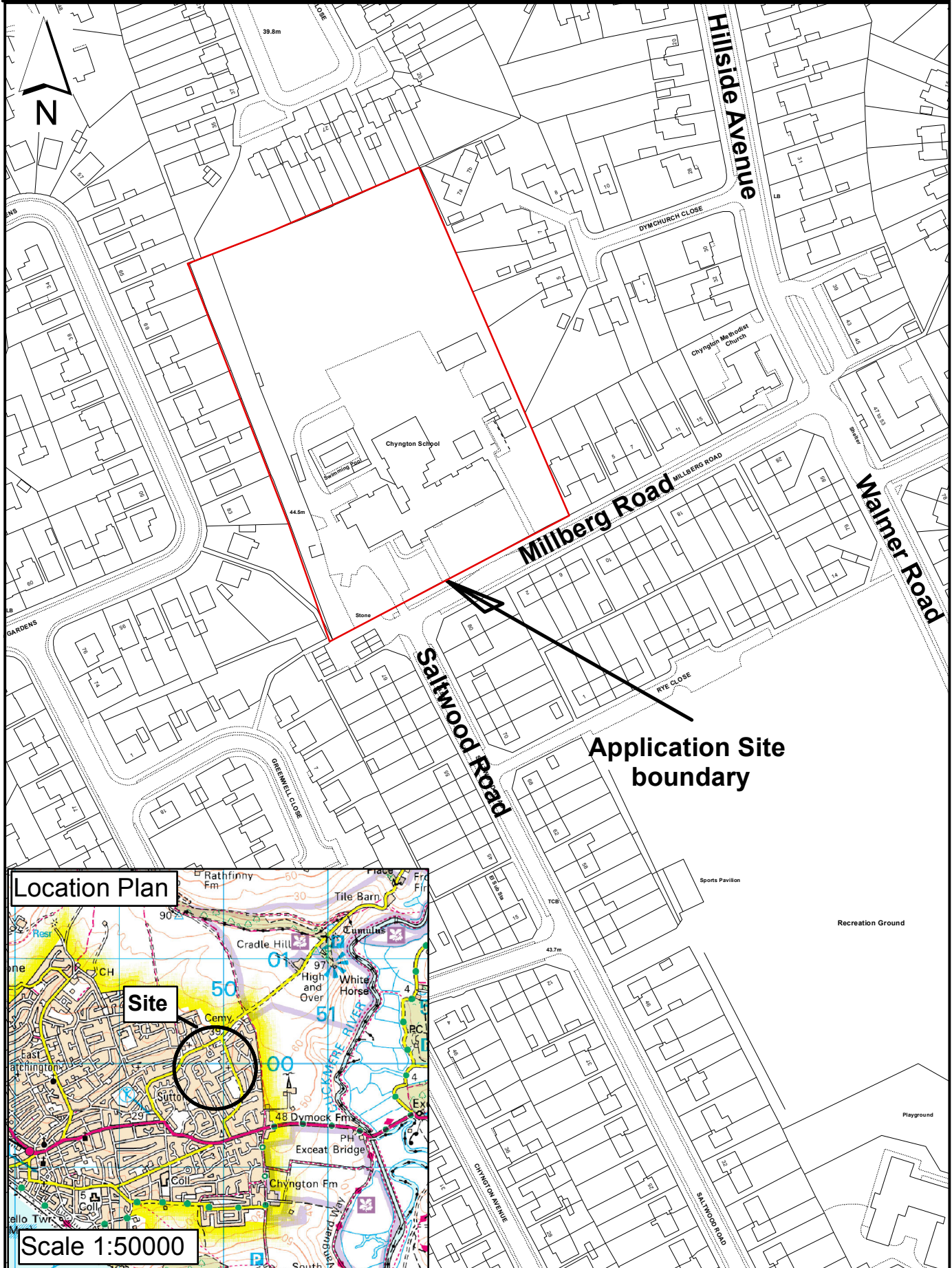


LW/3257/CC

Chyngton School, Millberg Road, Seaford.



Scale 1:2,000

Rupert Clubb BEng (Hons) CEng MICE
 Director of Communities,
 Economy and Transport
 East Sussex County Council

Reproduced from the Ordnance Survey mapping with the permission of the Controller of Her Majesty's Stationery Office © Crown Copyright. Unauthorised reproduction infringes Crown copyright and may lead to prosecution or civil proceedings. East Sussex County Council, 100019601, 2015